



Event Website Traffic Information

第38回



NAHA MARATHON

The 38th Naha Marathon

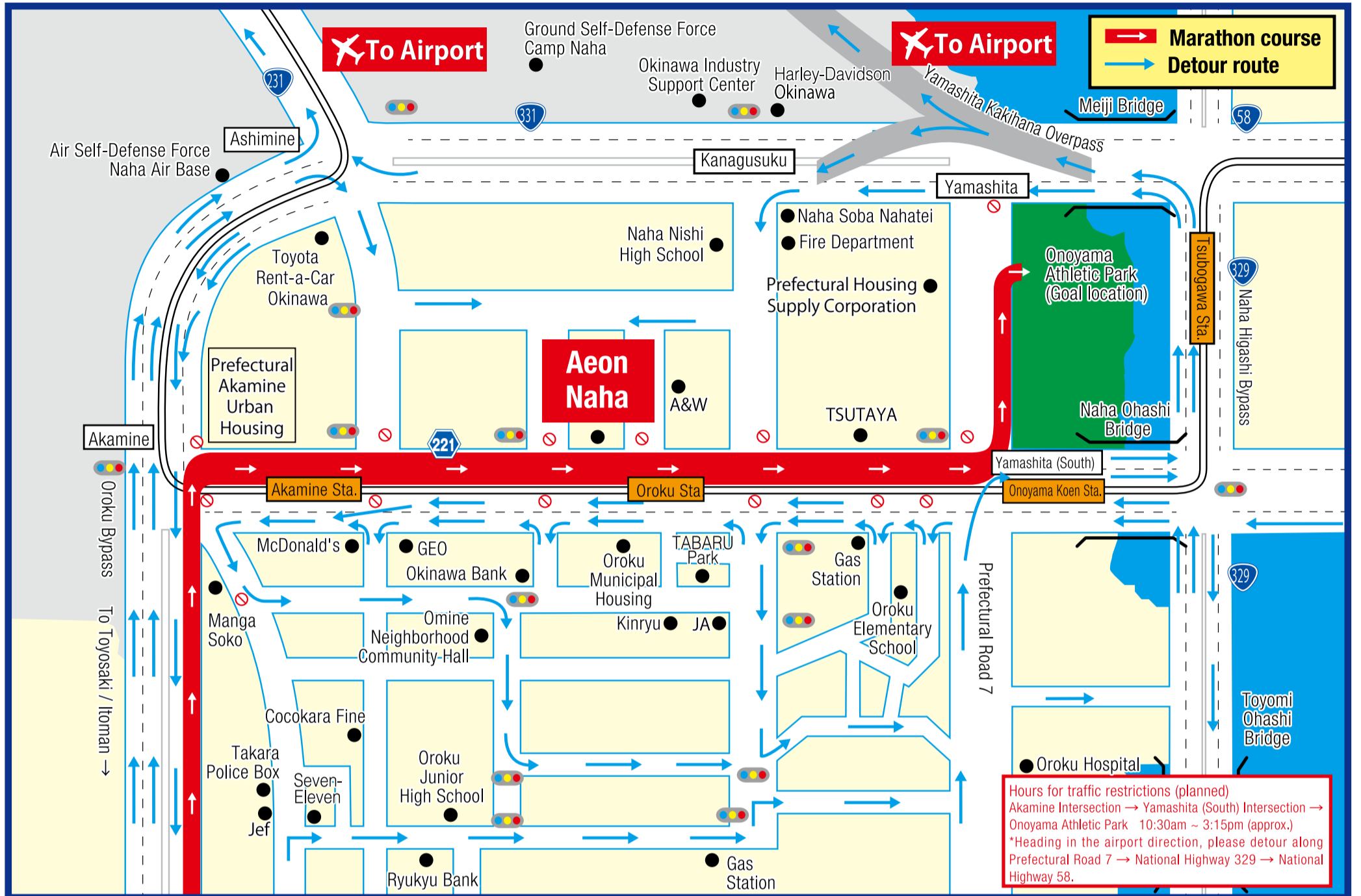
Inquiries about traffic restrictions (English support)
Naha Marathon Call Center
TEL.050-3786-7855

(Operation period: November 29 (Fri) ~ December 1, (Sun))
English support Operation is available only on December 1

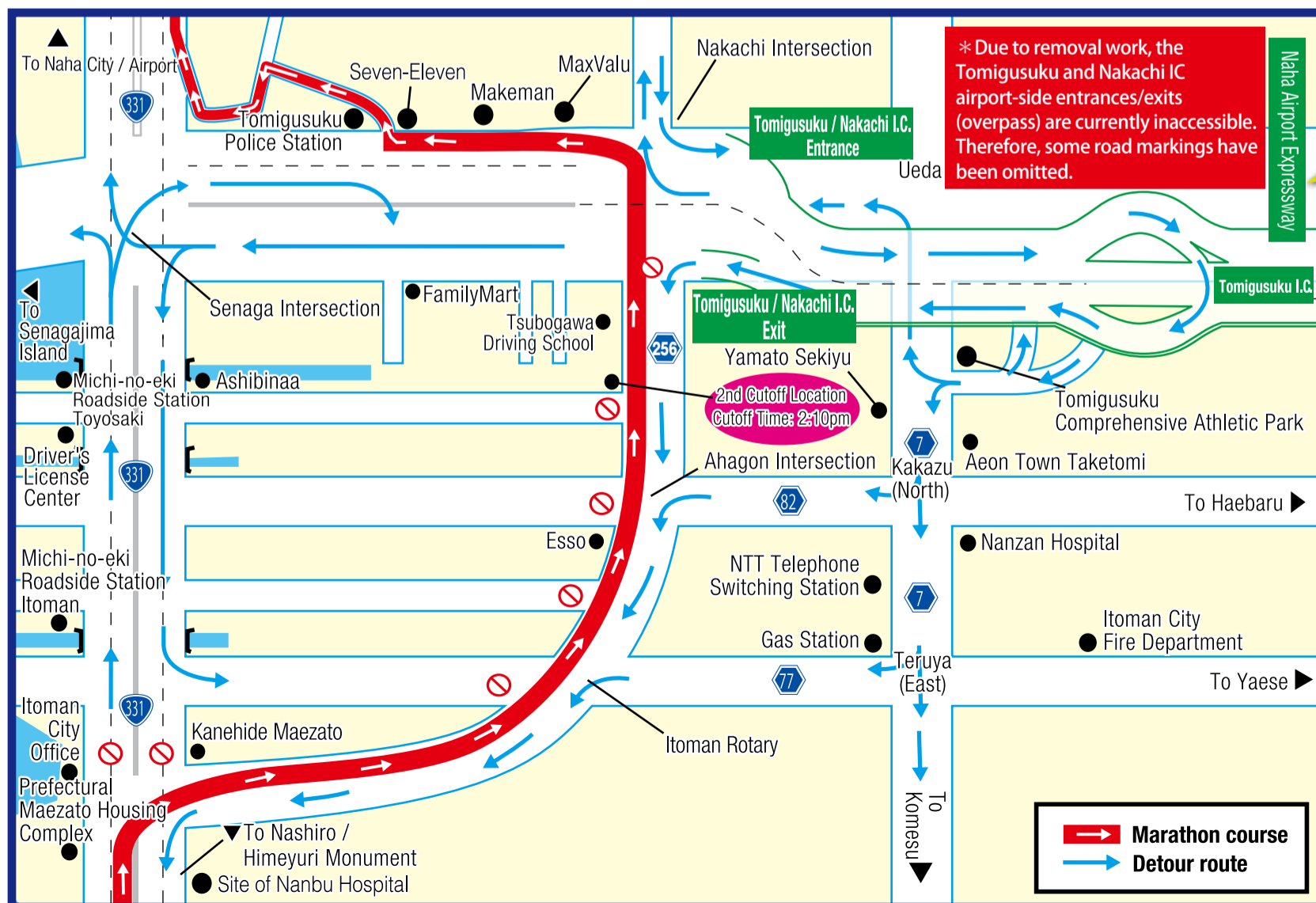
Cooperation request

Detour routes for Naha Airport and Aeon Naha districts

The area from Akamine Intersection on Prefectural Road 221 to Yamashita (South) intersection will completely restricted.



Detour routes for Toyosaki / Nishizaki

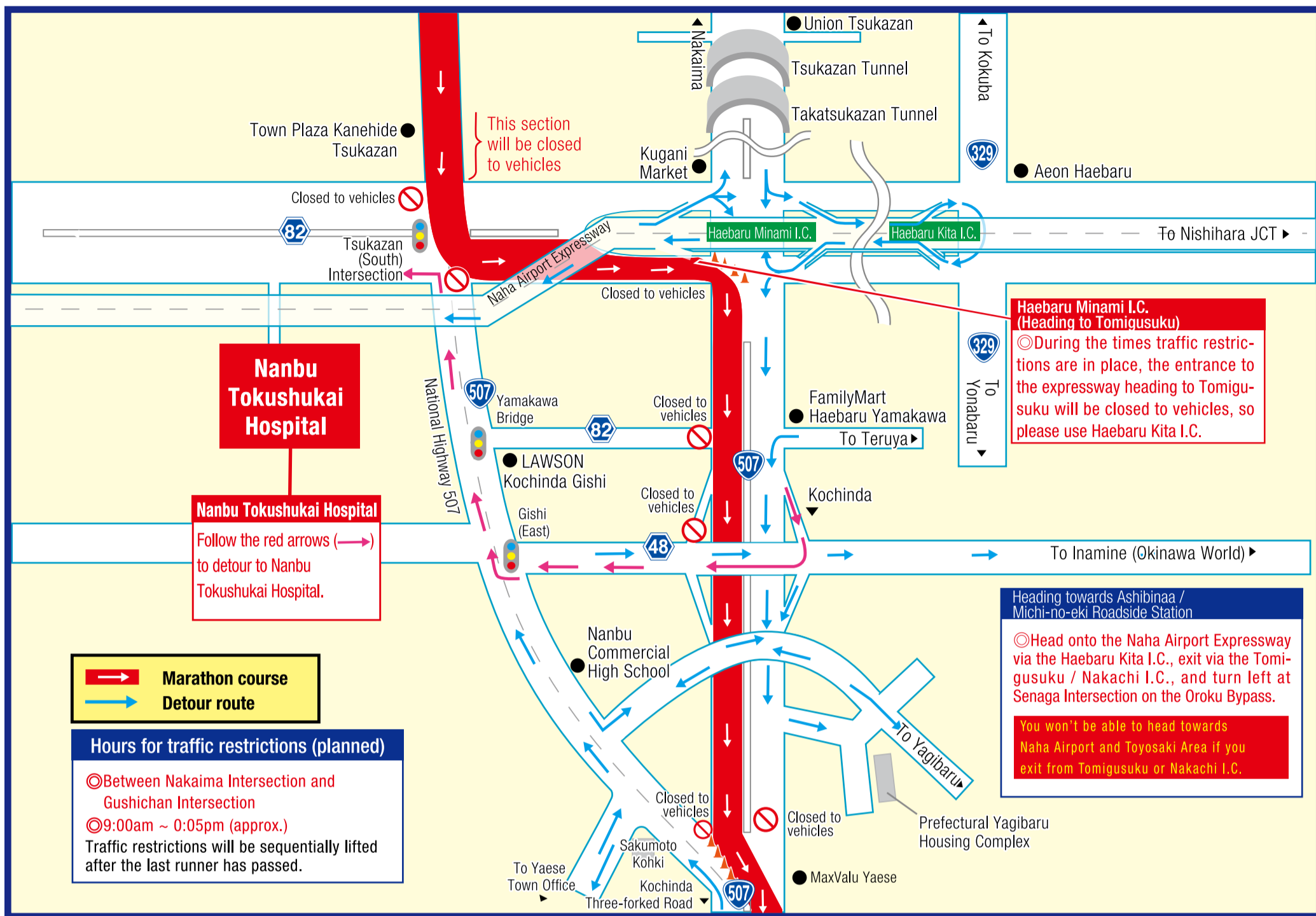


Naha Airport Expressway is a car-only road. Please be aware that motorcycles under 125cc and scooters are not allowed on the expressway.

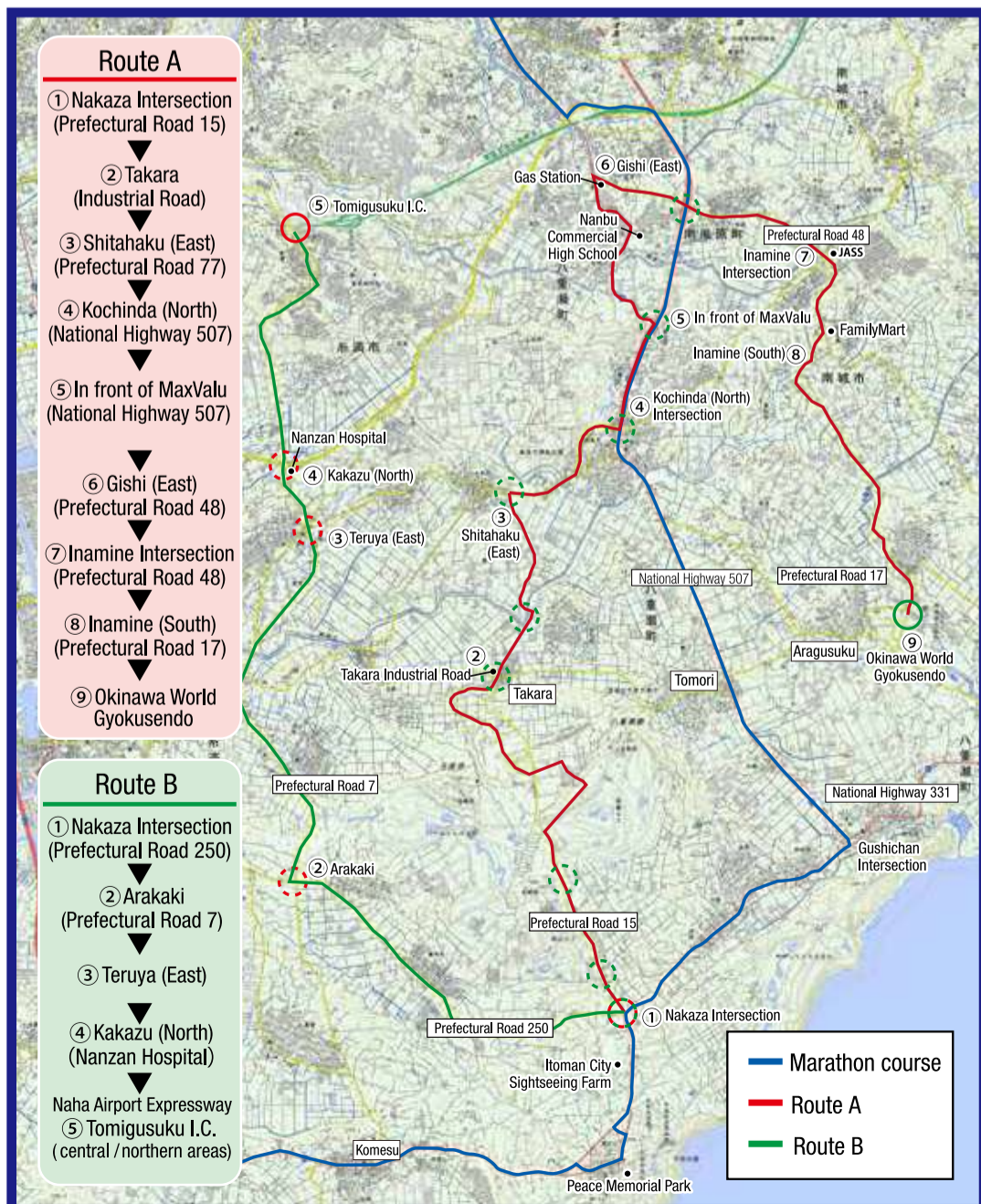
WARNING
To get to Naha Airport using the expressway, please exit to the local road at either Nishihara Interchange or Naha Interchange.

① Hours for traffic restrictions (planned)
Itoman Rotary ~ Naha City Med Assoc. Naha Nursing School
10:00am ~ 2:10pm (approx.)
*Traffic restrictions will be sequentially lifted after the last runner has passed.
② Hours for traffic restrictions (planned)
Ahagon Intersection ~ Orokusu Bypass
10:00am ~ 3:15pm (approx.)
*Traffic restrictions will be sequentially lifted after the last runner has passed.

Detour routes for Nanbu Tokushukai Hospital, Tomigusuku, and Nakachi I.C. area



Detour routes from Nakaza Intersection



Parking Information

